



The European Migration Network (EMN) is co-ordinated by the European Commission with National Contact Points (EMN NCPs) established in each EU Member State plus Norway.

European Migration Network

Italian case

National EMN – Conference Sweden, 13 October 2016 "Resettlement in Sweden and Europe – What works"

Mattia Vitiello CNR-IRPPS EMN NCP IT

 www.emnitaly.cnr.it

Resettlement in Italy

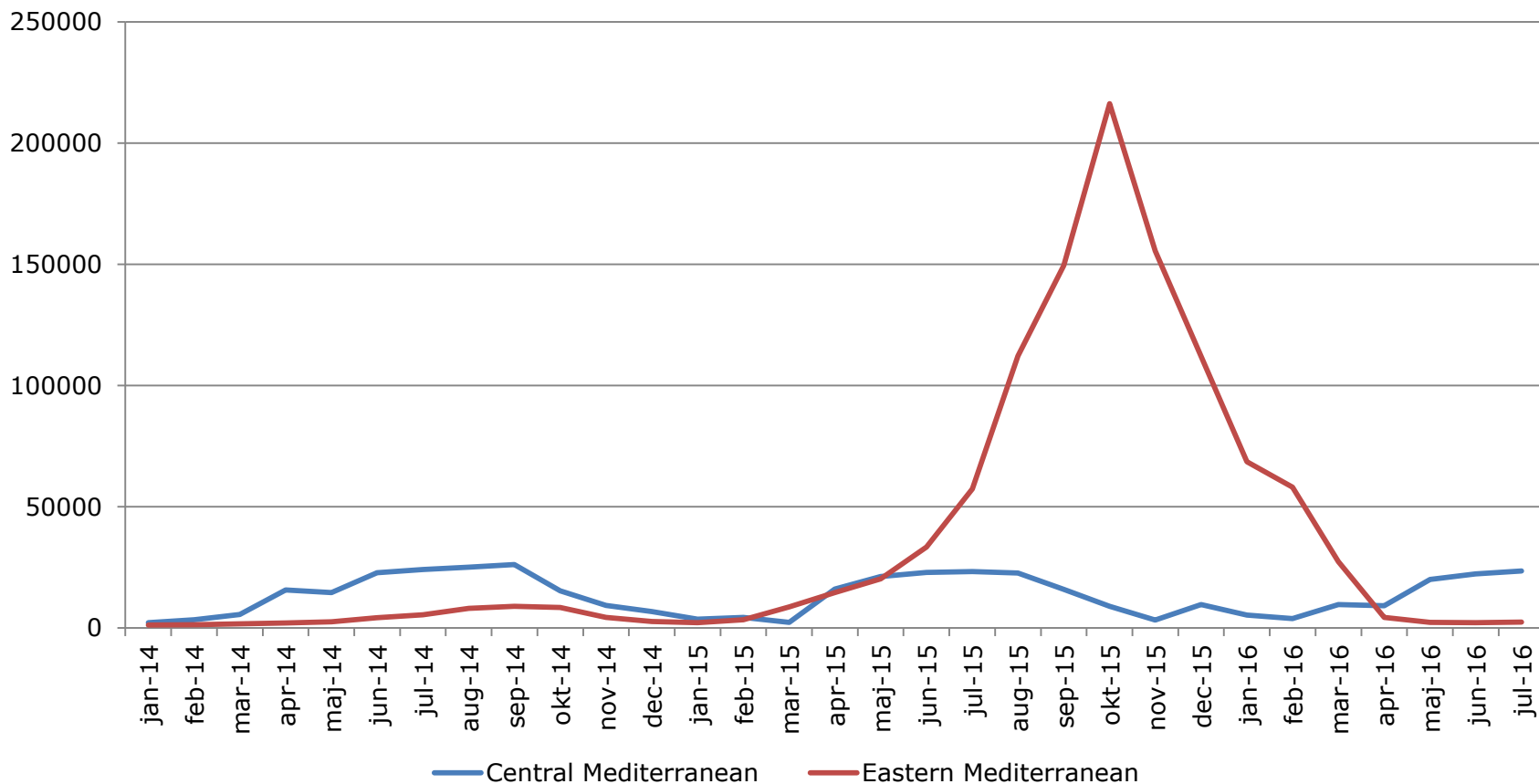
The European Migration Network (EMN) is co-ordinated by the European Commission with National Contact Points (ENCPs) established in each EU Member State plus Norway.

- Currently, in Italy there is not an act rules specifically ... *the transfer, on a request from UNHCR and based on the need for international protection of a third-country national or stateless person, from a third country to Italy, where they are permitted to reside with one of the following statuses: (i) refugee status within the meaning of Art. 2(d) of Directive 2011/95/EU; or (ii) a status which offers the same rights and benefits under national and EU law as refugee status.*
- Italy has a relatively recent history in the field of resettlement. In the past there have been some experiences in this regard but they had low numbers and short life. They remained isolated experiences because for the Italian authorities the political priority lay elsewhere.

Something has changed: migration scenario in Europe

The European Migration Network (EMN) is co-ordinated by the European Commission with National Contact Points (EMN NCPs) in all Member States, plus Norway.

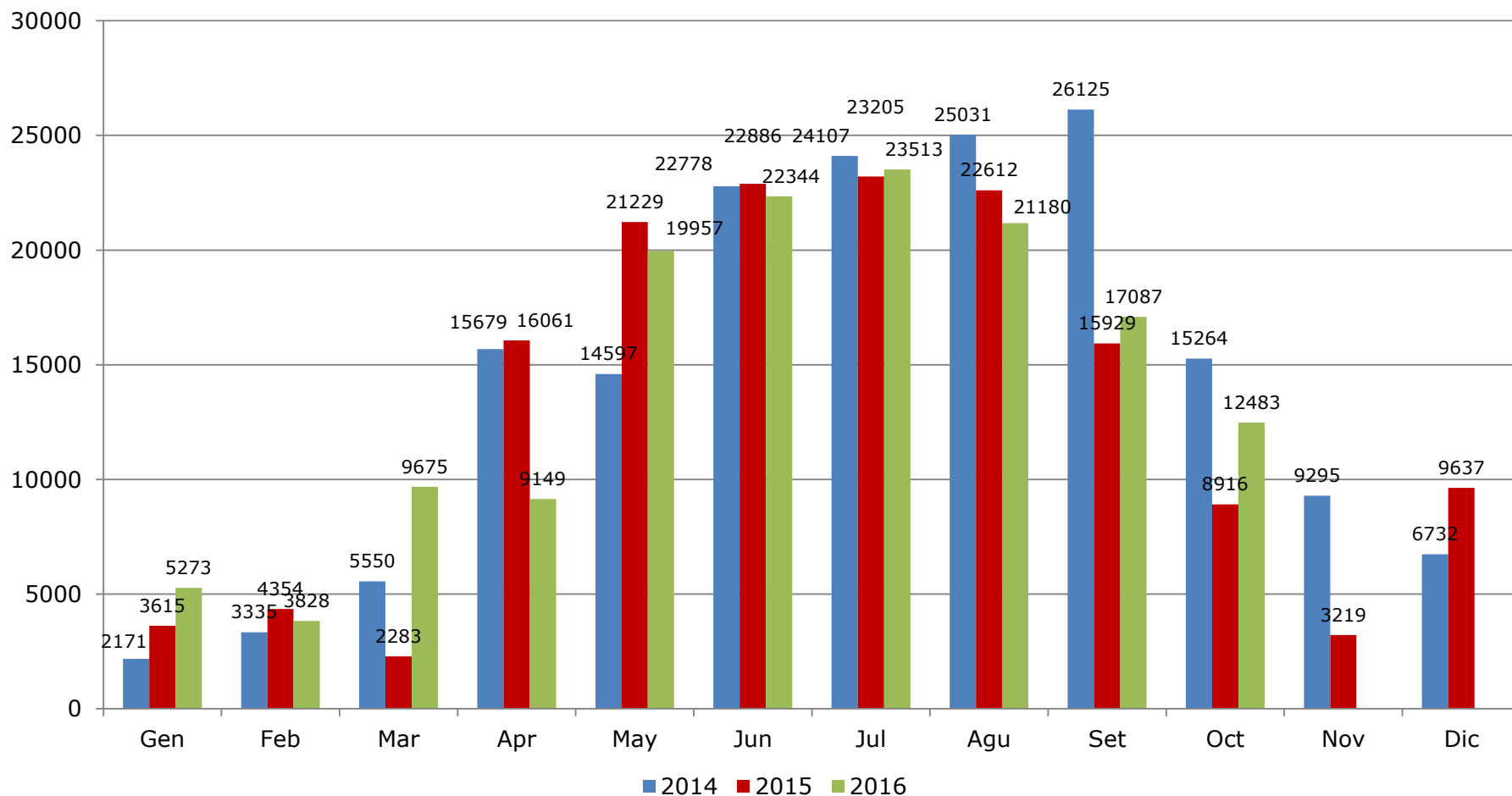
(Source: Frontex data as of 09 September 2016)



Migration scenario in Italy

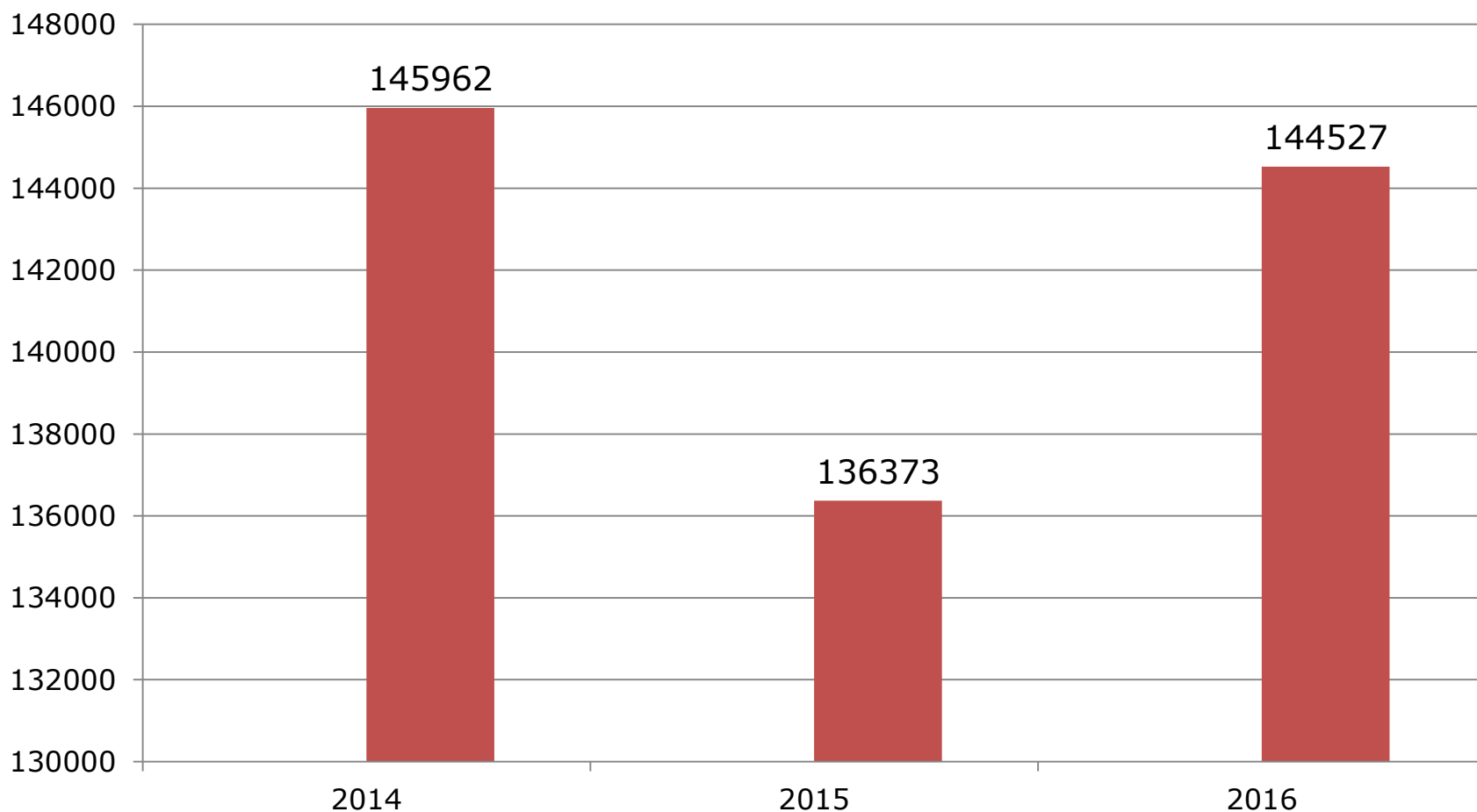
(Source: Ministry of interior as of 10 October 2016)

The European Migration Network (EMN) is co-ordinated by the European Migration Centre (EMC) in Malta, which is established in each EU Member State plus Norway.



Arrivals by sea from January 1 to October 10 compared with the figures for the same period of the years 2014 to 2015

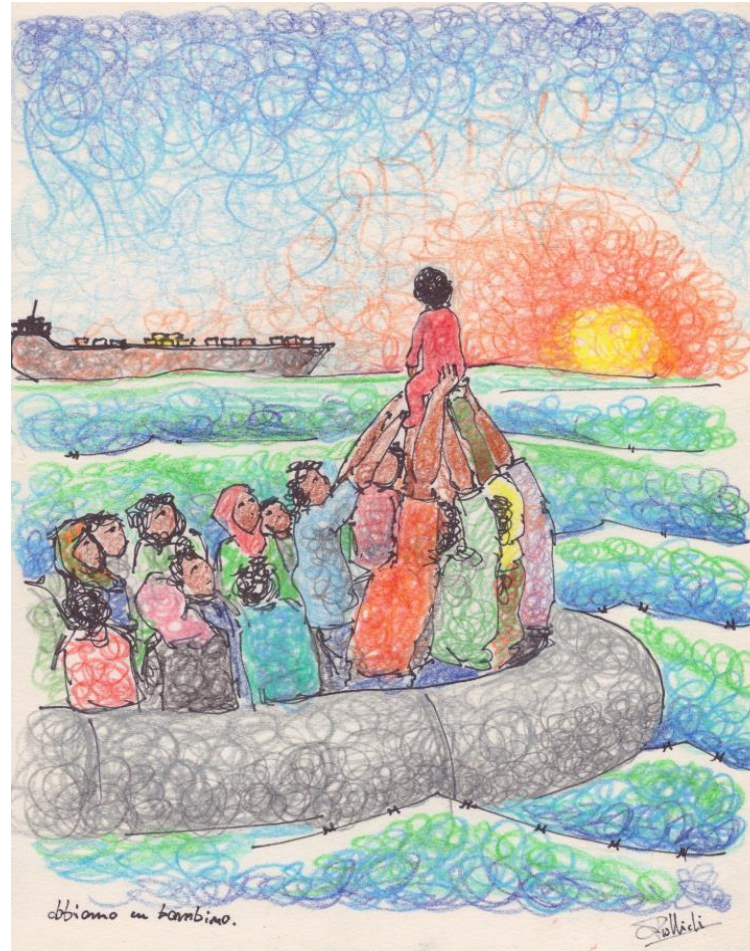
The European Migration Network (EMN) is co-ordinated by the European Commission with National Contact Points (EMN NCPs) established in all EU Member States and in Norway.



Do you still like the sea?

Resettlement as a tool to deal with the constant growth of the arrivals by sea and the number of victims

The National Programme provides refugees with more options for legal entry into Italy and helps relieve the situations of humanitarian crisis in third countries.



Italy launched its permanent resettlement national programme in 2015.

Resettlement programme: how works

The European Migration Network (EMN) is co-financed by the European Commission and National Contact Points (EMN NCPs) established in each EU Member State plus Norway.

- The identification and selection of the persons to resettle is made by UNHCR.
- OIM takes care of pre-orientation and travel.
- Resettlement interventions are coordinated by the Resettlement Office, set up for this purpose within Office III - International Relations - Department for Civil Liberties and Immigration of the Ministry of the Interior.



Once in Italy

The European Migration Network (EMN) is coordinated by the European Commission with National Contact Points (EMN NCP) established in each EU Member State plus Norway.

- When a candidate is selected and admitted to resettlement, he obtains the status of beneficiary of international protection and is hosted in the reception centres of the SPRAR system.
- Resettled persons enjoy the same rights and have access to the same social services provided to beneficiaries of international protection who have been described in the study EMN Focused Study "Integration of beneficiaries of international / humanitarian protection into the labor market: policies and good practices".

as a kind of conclusions

- Two limits: low numbers and lengthy procedures.
- To speed up the procedure by decentralization.
- Increasing the numbers by engaging the community of reception.
- A case study: “Opening humanitarian corridors”.



The European Migration Network (EMN) is co-ordinated by the European Commission with National Contact Points (EMN NCPs) established in each EU Member State plus Norway.

Thank you for your attention

to continue the discussion
m.vitiello@irpps.cnr.it